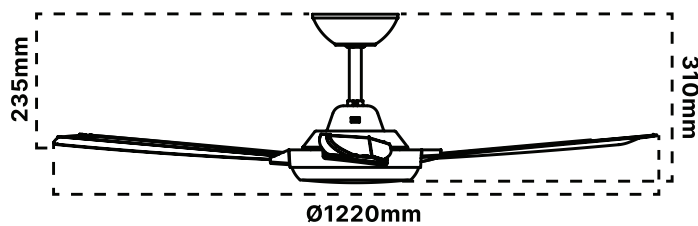


SAFETY INFORMATION

- The appliance is not intended for use by persons (including children) with reduced physical, sensory or mental capabilities, or lack of experience and knowledge, unless they have been given supervision or instruction concerning the use of the appliance by a person responsible for their safety.
- Children should be supervised to ensure that they do not play with the appliance.
- An all-pole disconnection switch must be incorporated into the fixed wiring, in accordance with local wiring rules.
- The structure to which the fan is to be mounted must be capable of supporting a weight of 30kg.
- The fan should be mounted so that the blades are at least 2.1 m above the floor in Australia.
- This fan is suitable for indoor, alfresco and coastal areas where the fan is fully undercover with a minimum of 1 wall. This fan is not waterproof. When installed in an alfresco or coastal area, the ceiling fan must be positioned in a location protected from water, wind and dust. Exposure to these elements will void the warranty. Mounting the fan in a situation where it is subject to water or moisture is dangerous and may increase the risk of damage, injury or electrical shock and will void the warranty.
- Must be assembled and installed by a licensed electrician.
- WARNING: If unusual wobbling or oscillating movement is observed, immediately stop using the ceiling fan and contact the manufacturer, its service agent or suitably qualified persons.
- The replacement of parts of the safety suspension system device shall be performed by the manufacturer, its service agent or suitably qualified persons.
- The fixing means for attachment to the ceiling such as hooks or other devices shall be fixed with a sufficient strength to withstand 4 times the weight of the ceiling fan; that the mounting of the suspension system shall be performed by the manufacturer, its service agent or suitably qualified persons.
- Fitting must be installed as per AS/NZS3000 regulations.
- Wiring must be completed by a qualified electrician.
- Ensure all electrical connections are secure and that there are no loose strands.
- Only the screws supplied with this product must be used. If alternate screws or fixings are used, they must be of the same type as the supplied screws/fixings. Do not use countersunk screws.

Product Dimensions



Product Specifications

Voltage	220-240V~ 50Hz
Power consumption	35W
Electrical classification	I
Motor	Ø153×8mm DC motor
IP rating	IP20
Blades	3
Blade pitch	11°
Airflow	12,000m ³ /hr (max)
Max ceiling rake	13°
Control	DC wall control
Speeds	3
Body material	ABS
Blade material	Powdercoated Passivated Steel
Warranty	6 years (4 years in-home + 2 years return to base)
Weight	4.3kg

Product Range

Name	Code	SKU	Finish	Fan size
AERIS	0884959	15243	White	48" (1220mm)

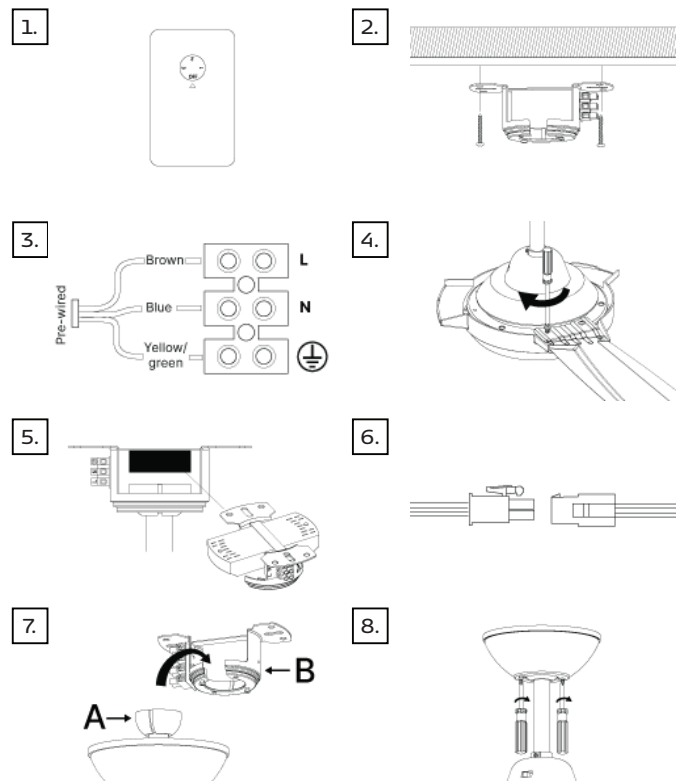
Installation Steps

To ensure correct function and safety, please read and follow all instructions carefully before assembly, installation and use of this ceiling fan. Please keep instructions for future reference. Isolate the mains power supply before commencing installation. Before commencing, check space for obstructions and ensure adequate clearance for installation (see clearance table).

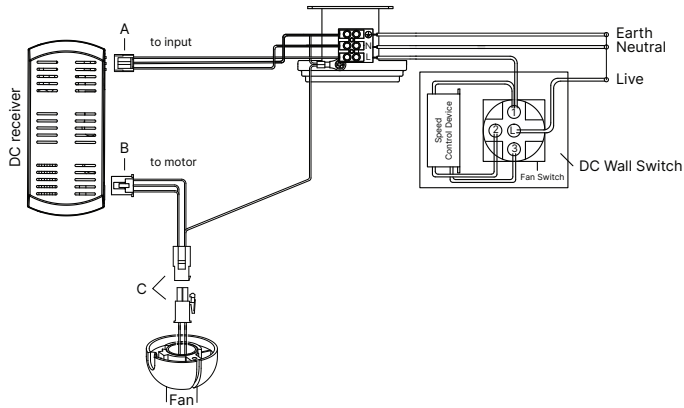
1. Install ceiling fan wall plate and cabling in accordance with AS/NZS 3000 wiring rules. **PLEASE NOTE:** This fan utilises a 3-speed DC Wall controller. This is NOT an RF Controller, and must be wired to the control receiver in the fan as per these instructions. Whilst the DC Wall controller can be used to control up to two fans from the same controller, controllers cannot be interlinked.
2. Install the hanging bracket to the ceiling joist or structure that is capable of carrying a load of at least 30kg, with two long screws provided. Ensure at least 30mm of the screw is threaded into the support. **NOTE:** The bracket screws provided are for use with wooden structures only. For structures other than wood, the appropriate screw

type **MUST** be used. Ensure the screws used are suitable for the mounting surface and the surrounding environment.

3. Connect the mains power supply to the Wall controller and then to the terminal block located on the ceiling fan - as per the Wiring section overleaf. All wiring must be in accordance with AS/NZS 3000 Wiring Rules and no exception or modifications should be made to these instructions.
4. Install blades by aligning the 2 holes on the blade with the 2 holes on the rotating section of the fan motor assembly and securing using the 2 blade screws. Ensure all screws are tightened evenly to reduce the chance of warping or unbalancing. Take care not to over tighten the screws, as this can damage the blades.
5. Insert the DC remote receiver into the mounting bracket. Join the quick connector cabling attached to the terminal block on the hanging bracket to the corresponding connector on the DC receiver (see receiver wiring).
6. Lift the fan assembly onto the mounting bracket. Ensure the key slot (A) of the hanger ball is positioned on the key pin (B) of the mounting bracket to prevent the fan from rotating when in operation.
7. Cover the mounting bracket with the canopy. Ensure all electrical wiring is tucked inside the canopy and that the wires are not damaged during this step. Secure the canopy to the hanger bracket using the screws provided.



Wiring

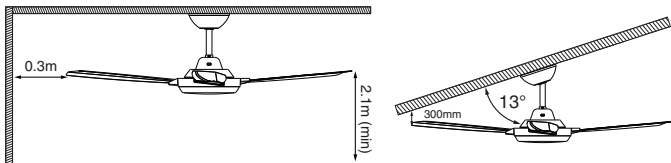


1. Connect the mains power Live to the central "L" terminal on the DC Wall switch.
2. Connect the Live output to the "1" output (as shown) on the DC Wall Switch.
3. Connect the Live output, Neutral and Earth cables to the applicable "L", "N", & \oplus terminals located on the ceiling fan hanging bracket.
4. Insert the DC remote receiver into the hanging bracket.
5. Insert the 3-port fixed wire quick connector (A) to the receiver power input socket.
6. Insert the 3-port DC motor output wire connector (B) to the receiver power output socket.
7. Insert the DC motor input wire connector (C) to the receiver motor power output socket.

Safety Clearances

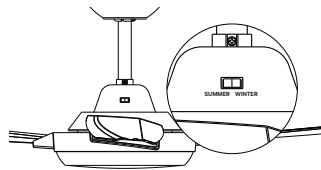
Wall* (from blade tip)	300mm
Floor (from blades)	2.1m (minimum)
Angle	13° max

*or any permanent building element including ceiling and joists



Commissioning

1. Run fan in all speeds and directions and check for noise and wobble.
2. Check all operational functions.
3. Run ceiling fan for 24 hours to bed-in (12 hours in summer mode and 12 hours in winter mode).



Outdoor Operation

This fan is suitable for protected and covered outdoor alfresco areas. Installation location include one wall and must be protected from dust, wind, rain and salt spray. Failure to meet these requirements will void warranty. Ceiling fan must be installed so that the edge of the blades is at least 1.5m away from the edge of the protected area (or eave). Damage and failure through the actions of wind, water and dust ingress or salt spray are not covered by warranty.

Reversing Airflow

Your ceiling fan can operate either in fan (summer) mode or reverse fan (winter) mode. To switch between summer and winter mode, slide the selector switch located on the top of the fan motor body to the required setting.

SUMMER Mode: The reverse switch shall be in the SUMMER position to make the fan rotate in an anticlockwise direction. The airflow will be directed downwards, for cooling in summer.

WINTER Mode: The reverse switch shall be in the WINTER position to make the fan rotate in a clockwise direction. The airflow will be directed upwards assisting in the circulation of warm air, for energy conservation in winter.

Care & Maintenance

- Every 6 months periodic cleaning of your ceiling fan is the only maintenance required. Use a soft brush or lint free cloth to avoid scratching the paint finish. Please turn off electricity power when you do so.
- Do not soak or immerse your ceiling fan in the water or other liquids. It could damage the motor or the blades and create the possibility of an electrical shock.
- Ensure that the fan does not come in contact with any organic solvents or cleaners.
- To clean the fan blade, wipe with only a damp clean cloth with NO organic solvents or cleaners.
- The motor has a permanently lubricated ball bearing so there is no need to oil.

NOTE: Always turn OFF the power at the mains switch before performing any maintenance or attempting to clean your fan.

Troubleshooting

Wobble: Ceiling fans tend to move during operation due to the fact that they are mounted on a rubber grommet. If the fan was mounted rigidly to the ceiling it would cause excessive vibration. Movement of a few centimetres is quite acceptable and DOES NOT suggest any problem.

Noise: When it is quiet (especially at night) you may hear occasional small noises. Slight power fluctuations and frequency signals superimposed in the electricity for off-peak hot water control, may cause a change in fan motor noise. This is normal. Please note that this is not a product fault - All electric motors are audible to some extent.

Please allow a 24-hour "breaking-in" period, most noises associated with a new fan disappear during this time.

Standard wear and tear: All ceiling fans are subject to standard wear and tear as the product ages through use. This is normal and will not constitute a product failure under warranty. Defects, wobble and noise caused by impacts, external damage and lack of regular maintenance are excluded from warranty.

Beep: When the fan starts up and is in normal operating condition it will beep once. If the receiver detects a problem after this beep, it will emit a beep code to indicate a fault (see codes below). In the event of an error state that cannot be resolved, contact support.

Start-up:

1 beep: Fan in normal operating condition

After start-up:

1 beep: Undercurrent detected (software limit)

2 beeps: Undercurrent detected (hardware limit)

4 beeps: Undervoltage detected

5 beeps: Overvoltage detected

6 beeps: Wiring fault detected (Note: Check all the interconnector wiring. Ensure the contact is good and that the colour match)

See separate leaflet for warranty.

Images are for illustrative purposes only. Due to changes in industry standards and continual product development, product specifications are subject to change without notice.

For sales and product information telephone

Customer Service: 1300 438 658

New Zealand: 0800 235 867

Website: lumiolighting.com.au